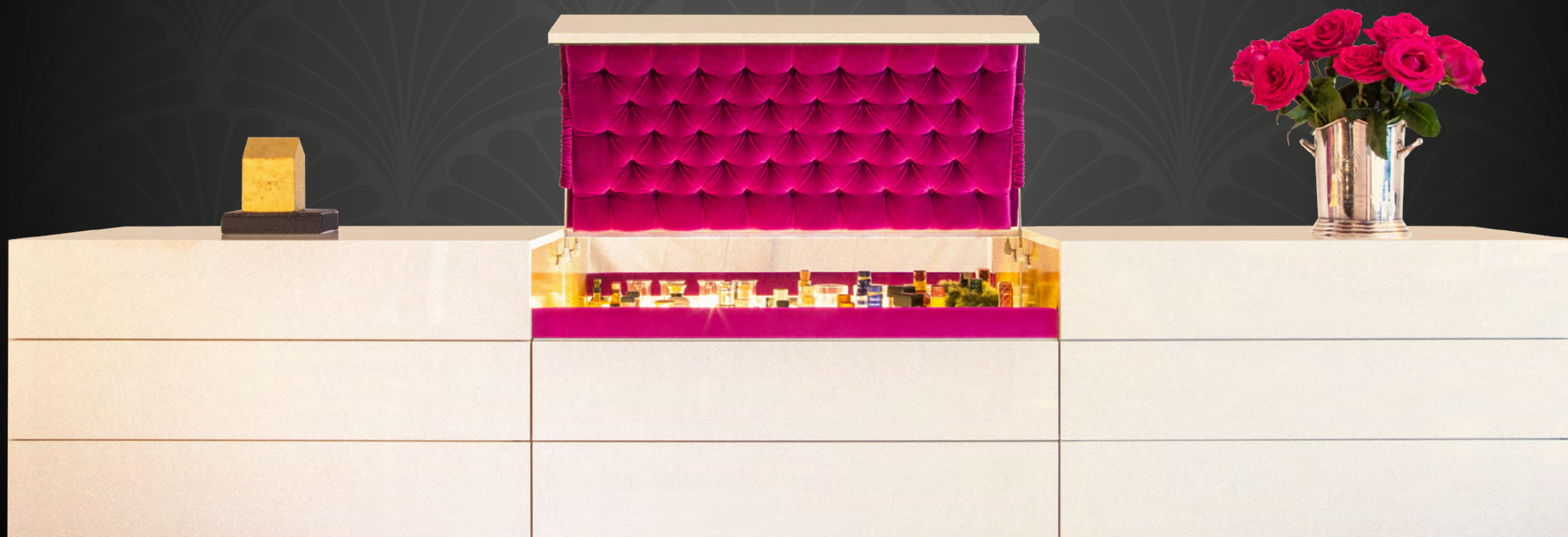


biszet

b20 bar cabinet







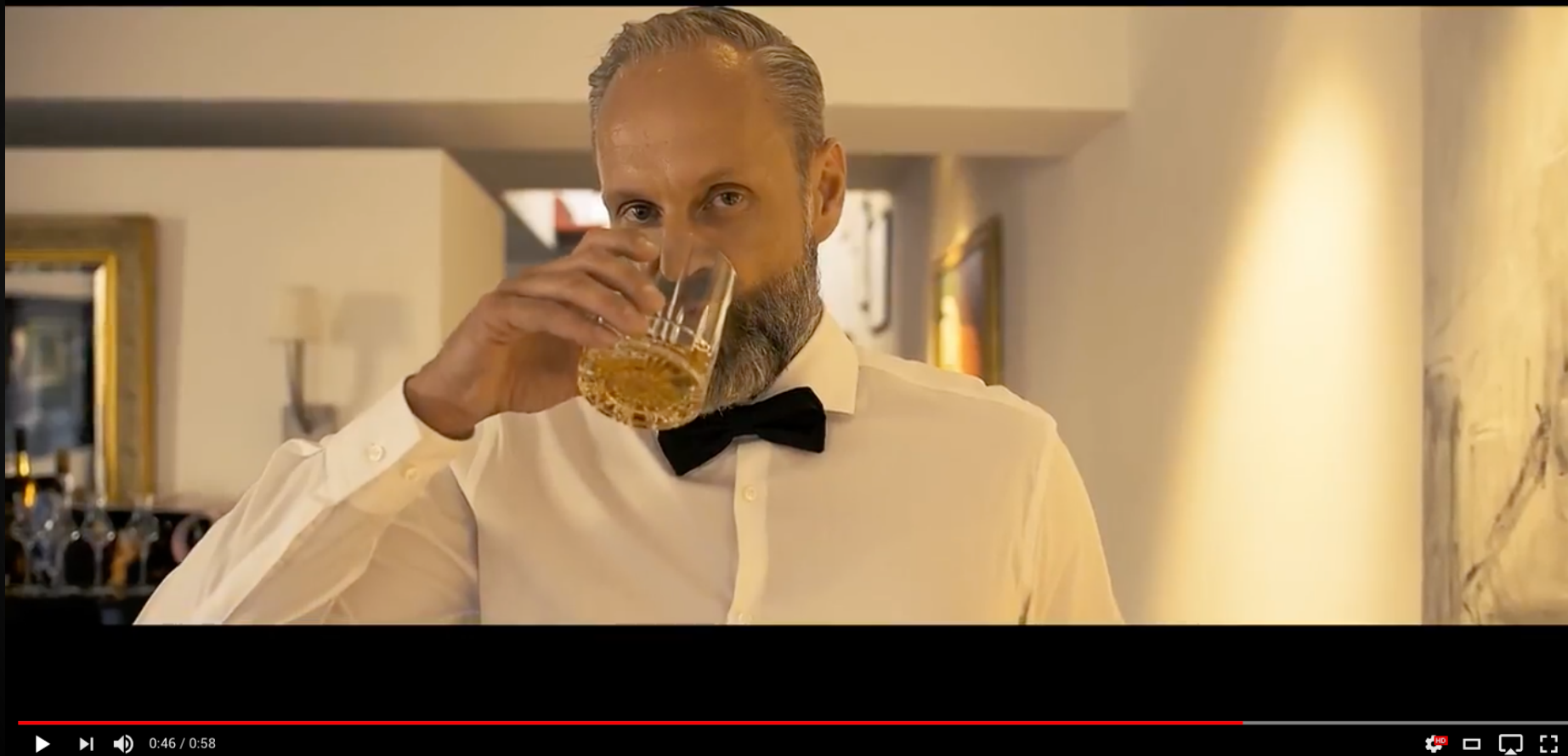
The bar culture renaissance

The bar has always been a very special place. A place for great moments and exuberance.

We bring back the opulence, style and feeling of the Roaring Twenties combined with the zeitgeist of today. With the best materials and the finest workmanship. For the Hemingway part of the evening, when the elegant sideboard opens to reveal its scandalous double life: an integrated bar of baroque splendour, the playful refinement of which immediately lends any room the flair of an exclusive establishment. When it is time for a new atmosphere and a new culture of conversation.

A brilliant piece of bar furniture—innovative, surprising and thought through down to the final details.





To view the video on YouTube, simply click on the image above

Impressions

The biszet b20 sideboard—an elegant piece of furniture for the most sophisticated tastes.

Clear shapes, refined piano lacquer, even symmetry and geometric precision. The lid of the integrated bar is silently raised to reveal the fascination of a whole new bar culture.

Who can help but think of the famous bars where stars and artists have inspired each other, where you meet connoisseurs and go-getters, bohemians and musicians—the famous places of dramatic presentation, or of solitary reflection on the meaning of the world. The bar has always been the place to meet beautiful women and interesting characters. A place where the bartender understands his guests and awakens their enjoyment with a perfectly suited cocktail.



The open sideboard exudes classic bar charm with beguiling colours. A seductive mix of the finest velvet and the dignified shimmering gold of the side walls. Perplexing placement of light reflections and cleverly positioned mirrors multiply the variety of

bottles and glasses, thus making the arrangement a unique live performance.

The biszet b20 sideboard—an exclusive bar Made in Germany.



Production

The biszet b20 sideboard is an elaborate piece of designer furniture manufactured in Germany. A traditional cabinetmaker's workshop—in family hands since 1931—manufactures the furniture, aligning and finalizing the various work steps involved.

Multiple almost forgotten crafts are skilfully interwoven to harmonise the bar's elegant puristic appearance with its dramatically luxurious intimacy.

The experienced craftspeople master ultra-modern machinery as well as classical disciplines, which can still only be carried out by hand to achieve a particular beauty—an expression of soul and warmth.

The luxurious piano lacquer look with its even mirror gloss and the resulting light reflections on the surfaces can only be achieved in several material- and labour-intensive steps through elaborate repeated application and sanding of the top-notch multi-layer lacquers.

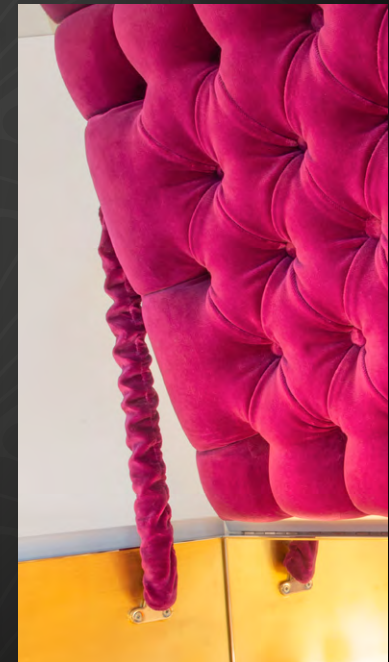
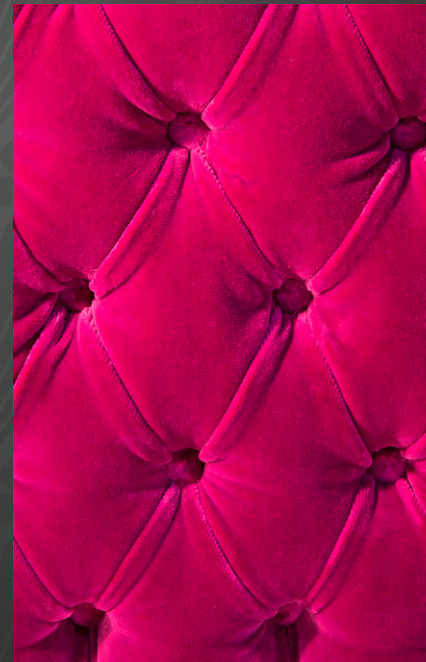


Finishing of both sides of the bar's interior with 24 carat gold leaf is carried out solely by employees highly experienced in restoration techniques.

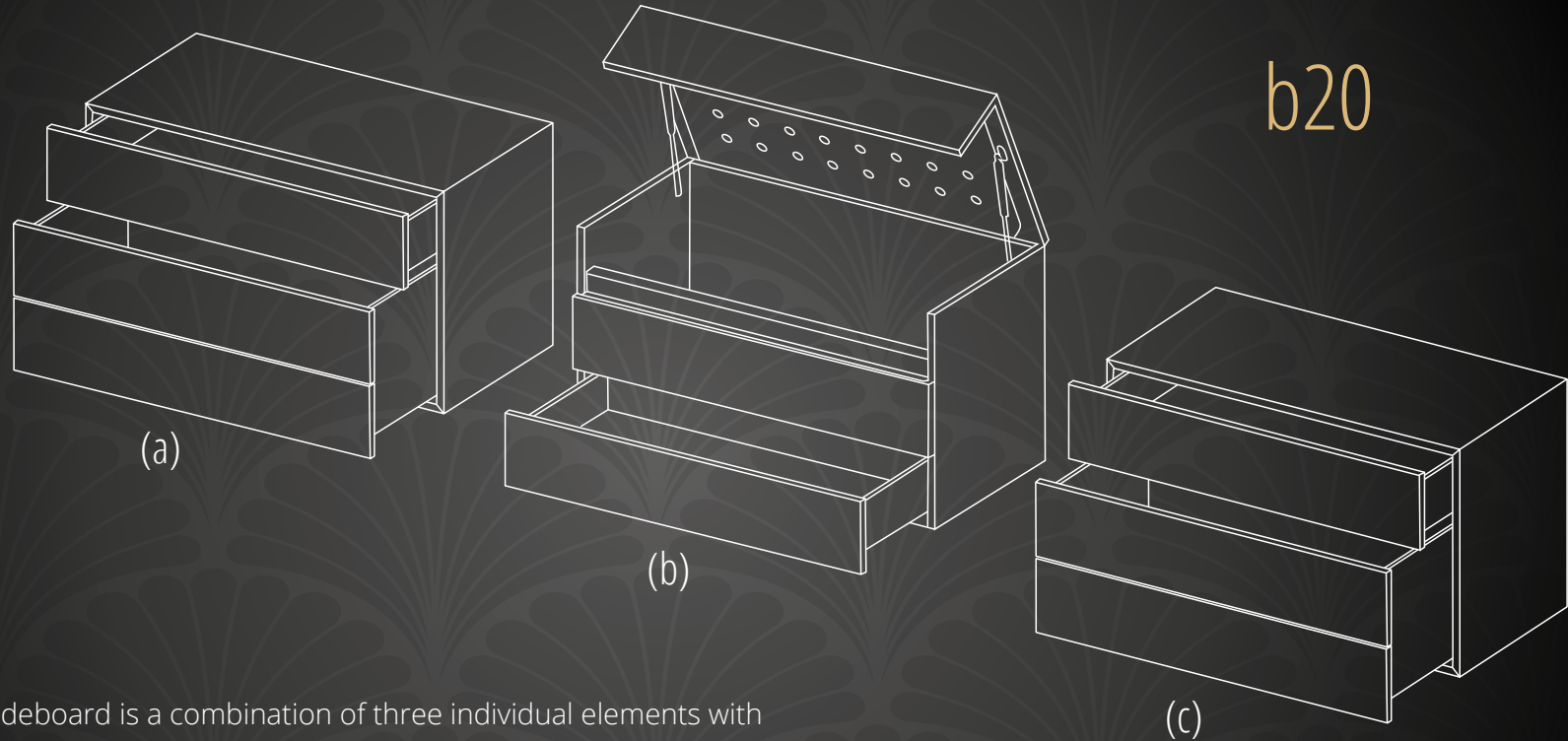
The fine velvet inside the bar is supplied by Designers Guild, who have received countless awards for the quality of their materials and designs. The fabric is characterized by an extraordinarily intense luminosity and a supple texture.

Experienced upholsterers fasten the tailor-made fabrics to the bar lid with fine buttoning, carefully cover the bottoms of the drawers and even wrap the gathered precious velvet artistically around the gas pressure springs used to keep the bar lid open.

The carpenters, varnishers, upholsterers, electricians and other technicians and specialists of the respective trades all relish in the development and production of this extraordinary piece of furniture artwork.



Modules



The biszet b20 sideboard is a combination of three individual elements with enormous spatial capacity. It consists of three individual modules (a, b and c), each of which is one meter in width and available separately. The centre module (b) contains the bar and, beneath this, a flat drawer. The two outer side modules on the right and left (a and c) each contain an upper flat drawer and a deep drawer underneath.

Bar element *(module B)*

Dimensions:

Width 1000 mm, height 570 mm, depth 530 mm, weight 85.0 kg

Body: medium density fibreboard, white*, multi-layered high-gloss lacquering and polishing, piano lacquer finish.

Lid interior: first-class upholstery in voluminous red velvet by Designers Guild. With buttoning.

Lid front: mirrored from the inside. With a piano hinge and two gas pressure springs to keep the lid open, also covered by hand with red velvet.

Side walls: covered with 22 carat gold leaf and matte lacquered.

Interior rear wall: mirrored, as is the interior floor. Satin-finished glass angle for drinking glasses on the inside. A sensor switch automatically switches the inside light on and off when opening and closing the bar lid. Lighting consisting of 5 warm white LED spotlights with power supply unit.

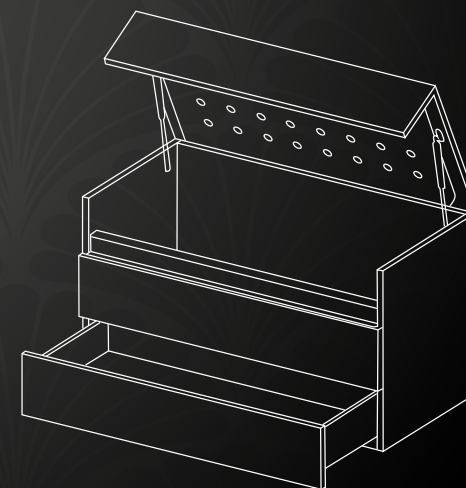
Inside front: mirror on the front inside over the satin-finished glass angle. Wooden trim, covered by hand with red velvet by Designers Guild and upholstered.

The white, high-gloss lacquered front panel of the bar lid is equipped with a spring, which can simply be pressed in to open the lid upwards.

Drawer: flat drawer under the bar compartment, white, multi-layer high-gloss lacquer finish, with double flooring, covered with thinly upholstered red velvet by Designers Guild.

Drawer can be opened by pressure catch with synchronising bar. The synchronising bar allows for pressing any point of the front piece to open the drawer, not just the middle. This enables comfortable operation. Designed as underfloor pull-outs, i.e. the pull-outs are not visible.

*Special lacquering on request



Side elements *(modules A & C)*

Dimensions per module:

Width 1000 mm, height 570 mm, depth 530 mm, weight 55.0 kg each

Body: medium density fibreboard, lid and exterior walls in white*, multi-layered high-gloss lacquering and polishing, piano lacquer finish.

Both drawers with double flooring, covered with thinly upholstered red velvet. Insides white and plastic coated, made of Egger W980 SM

An upper flat drawer, lacquered in matte white, behind a front piece. A deep drawer underneath, lacquered in matte white, behind two front pieces. Both drawer pull-outs can be opened by means of pressure catchers with a synchronising bar. The synchronising bar allows for pressing any point of the front piece to open a drawer, not just the middle. Designed as underfloor pull-outs, i.e. the pull-outs are not visible.

Both modules (A & B) have three drawer front pieces each, white, multi-layered high-gloss lacquering and polishing, piano lacquer finish.

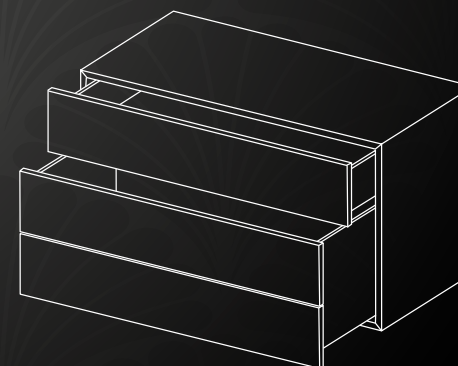
*Special lacquering on request

Assembly:

To ensure the biset b20 sideboard maintains its floating character, it should be installed precisely and securely by specialists such as cabinetmakers. Various screw connections and fixing materials could be required depending on the condition of the existing wall.

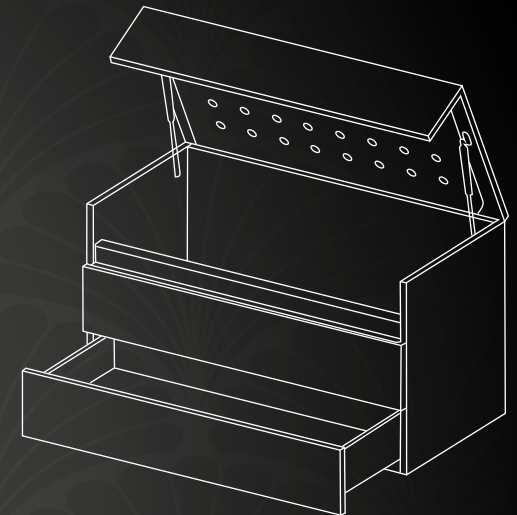
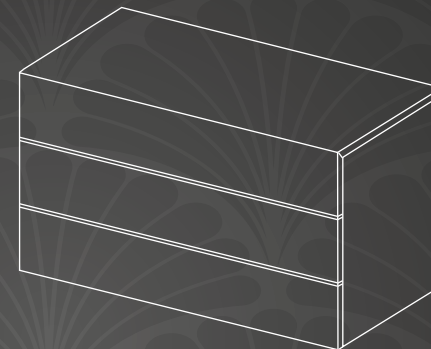
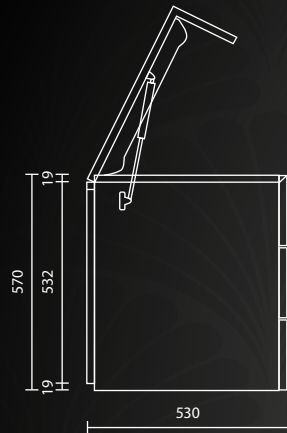
The furniture is hung on notch strips, which are attached to the wall on site. The notch strips as well as a template for simple and exact positioning of the strips are all included in the scope of delivery.

Fixing material such as screws and dowels are not included in the scope of delivery, as the suitable fastening material has to be determined on site in each individual case.

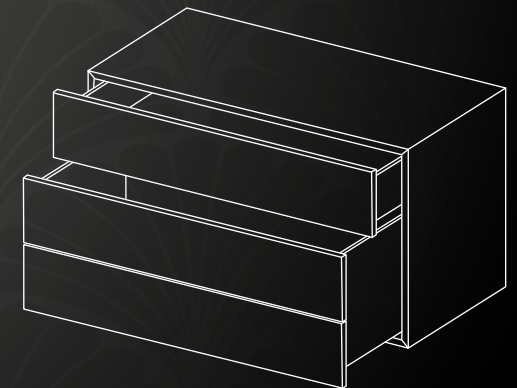
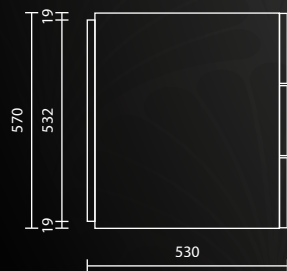


Product details

Bar cabinet element



Sideboard element



Showroom

Would you like to take a look at the bar cabinet in advance with no obligation to buy?
If so, then stop by the Ohhh de Cologne concept store.





Ohhh
DE COLOGNE

Spichernstrasse 6, 50672 Cologne
open Tuesday to Saturday from 11 am to 7 pm



biszet



biszet GmbH • Jürgen Kraus • Genter Straße 26 • 50672 Cologne, Germany
phone: +49 221 51 80 08 • info@biszet.de • www.biszet.de